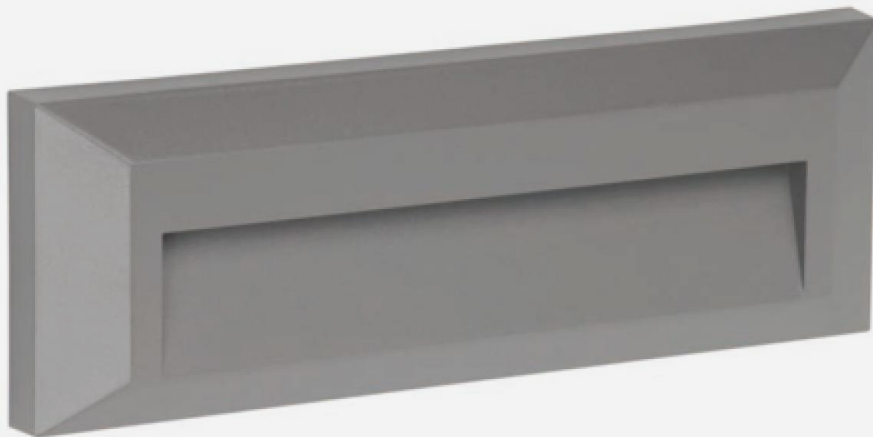



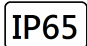


## WARTY

W80xL230xD27mm 3.5W Max IP65



ARCHITECTURAL WALL LIGHT. Housing: ABS and polycarbonate.. LED module: CRI>80, LM-80 performance approval >50,000 hours. Applications: carpark, hotels, restaurants, schools, dormitory, supermarkets, shopping malls, commercial buildings.

## Technical Data

Luminaire Type- 安裝方式 Tipo de luminaria	Wall Mounted Type-壁裝-Tipo montado en la pared
Dimension-尺寸-Dimensión	W: 80 x L: 230 x D: 27 mm
Input Voltage-輸入電壓-Voltaje de entrada	AC220-240V 50/60HZ
Power Consumption Max-燈具功率 Consumo de energia Max	3.5W
LED Driver Type LED驅動款式 Tipo de controlador LED	Integrated-type LED Driver--Refer to LED driver specification 請參閱LED驅動器規格 Consulte la especificación de controlador de LED 1. ON/OFF Switch AC220-240V 50/60HZ 2. ELV Dimming Driver (5-100%) AC 100-120V 50/60Hz or AC 200-240V 50/60HZ 3. 0-10V Dimming Driver AC100-240V 50/60HZ 4. Dali Dimming Driver AC100-240V 50/60HZ
LED Driver Features 驅動特性 Funciones del controlador de LED	EFFICIENCY (Typ.): >70%
Control Protocol-控制協議 Protocolo de Control	0-10V / Dali
Beam Angle 光束角 ángulo de haz	Asymmetric
Light Source Brand-光源品牌-Fuente de luz de marca	CREE - ( Photobiological safety-IEC 62471 'Risk Group 1' (low risk) )
"Lumen Maintenance LM-80 Reported by TM-21"	1. L90(10k) = 50,700 hrs 2. L80(10k) > 63,500 hrs 3. L70(10k) > 63,500 hrs
LED Life-LED壽命-La vida del LED	>60,000 hours
Color Temperature -色溫 Temperatura del color	2700K / 3000K / 4000K / 5000K / 6500K
Color Rendering Index-顯色指數 Índice de reproducción cromática	> 80
MacAdam Ellipses Binning 麥克亞當橢圓分級 Mac Adam binning elipse	Standard Deviation Colour Matching < 3 SDCM 標準偏差配色 < 3 SDCM Coincidencia de color estándar Desviación < 3 SDCM
Luminaire Efficacy 燈具效率 La eficacia de la luminaria	• 55 Lm/w(2700K), • 55 Lm/w(3000K), • 60 Lm/w(4000K), • 65 Lm/w(5000K), • 65 Lm/w(6500K),
LED Source Luminous Efficacy LED光源光效 Fuente luminosa LED Eficacia	• 90 Lm/w(2700K), • 90 Lm/w(3000K), • 95 Lm/w(4000K), • 100 Lm/w(5000K), • 100 Lm/w(6500K),
Housing materials-外殼材料 Materiales de la carcasa	ABS and Polycarbonate
Housing Color 外殼顏色 color de la carcasa	Matte White    Matte Black    Matte Grey    Dark Grey
Ingress Protection-防護等級 Protección de ingreso	IP65
Environment-使用環境-medio ambiente	Outdoor
Operating Humidity -工作濕度 Humedad de funcionamiento	0~90%, non-condensing-不結霜 sin condensación
Operating Temperature Range / 工作溫度範圍 Rango de temperatura de funcionamiento	-30 °C / +50 °C
Comply Testing Standard 符合測試標準 Cumplir el estándar de prueba	LED Luminaires: IEC 60598-1 / IEC 60598-2-2 / Photometric data-IES format LED Driver: EN 55015 / IEC 61000-3-2 / IEC 61347-1 / IEC 61347-2-13 / IEC 61547
Certification-認證-Certificación	   

Project	Fixture#	Date
		Firm



## Ordering Information

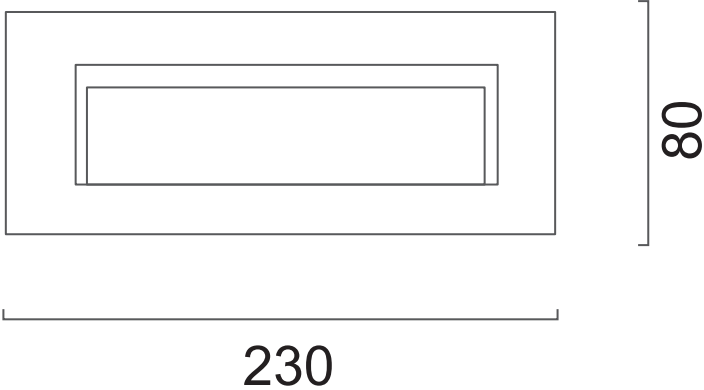
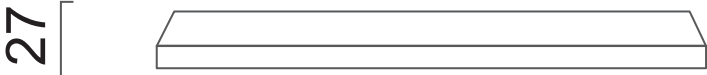
Choose the option that suits your need and write its corresponding code on the appropriate line to form the product code.

Example product code: [WARTY-3.5W](#)

WARTY -           3.5W            
Power Consumption

Power Consumption	
Code	Description
<a href="#">3.5W</a>	3.5W

Technical Drawing



Unit: mm