

## DYNON

Dia 104 to Dia 213mm Max 23W



CB



IP20



ZigBee®

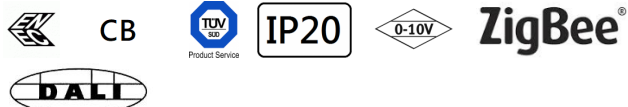


LED CEILING LIGH. Housing made of Polycarbonate. and opal Polycarbonate diffuser. LED module: LM-80 performance approval >50,000 hours. Integrated-Type ELV, 0-10V, DALI, DMX and RDM LED constant current control gear.Applications: carpark, hotels, restaurants, schools, dormitory, supermarkets, shopping malls, commercial buildings.

## Technical Data

Luminaire Type-安裝方式Tipo de luminaria	Ceiling Mount Type-吸頂安裝-Tipo mount en el techo	
Dimension-尺寸-Dimensión	• Dia 104 x H: 56mm • Dia 170 x H: 61.5mm	Dia 150 x H: 60mm Dia 213x H: 63mm
Input Voltage-輸入電壓-Voltaje de entrada	AC220-240V 50/60Hz	
Power Consumption Max-燈具功率 Consumo de energía Max	• 6W @ Dia 104mm • 11W @ Dia 150mm • 15W @ Dia 170mm • 20W @ Dia 213mm	9W @ Dia 104mm 15W @ Dia 150mm 18W @ Dia 170mm 23W @ Dia 213mm
LED Driver Type LED驅動款式 Tipo de controlador LED	Integrated-type LED Driver --Refer to LED driver specification 請參閱LED驅動器規格 Consulte la especificación de controlador de LED 1. ON/OFF Switch AC220-240V 50/60HZ 2. ELV Dimming Driver (5-100%) AC 100-120V 50/60Hz or AC 200-240V 50/60HZ 3. 0-10V Dimming Driver AC100-240V 50/60HZ 4. Dali Dimming Driver AC100-240V 50/60HZ 5. DMX Driver AC100-240V 50/60HZ 6. RDM Driver AC100-240V 50/60HZ	
LED Driver Features驅動特性 Funciones del controlador de LED	POWER FACTOR : PF>0.90 @ Full Load TOTAL HARMONIC DISTORTION: THD< 20%	
Control Protocol-控制協議 Protocolo de Control	0-10V / Dali / DMX 512 / RDM / ZIGBEE Wireless Control	
Beam Angle光束角ángulo de haz	90°	
Light Source Brand-光源品牌-Fuente de luz de marca	GLORY SKY (Taiwan Epistar) -SMD	
"Lumen Maintenance LM-80 Reported by TM-21"	L70(10k) > 63,500 hrs	
LED Life-LED壽命-La vida del LED	>60,000 hours	
Color Temperature -色溫 Temperatura del color	2700K / 3000K / 4000K / 5000K / 6500K	
Color Rendering Index-顯色指數 Índice de reproducción cromática	> 80 >90	
MacAdam Ellipses Binning 麥克亞當橢圓分級 Mac Adam binning ellipse	Standard Deviation Colour Matching < 3 SDCM 標準偏差配色 < 3 SDCM Coincidencia de color estándar Desviación < 3 SDCM	
Photobiological safety-IEC 62471 / of Luminaire 光生物安全檢驗(IEC/EN 62471) 結果: Seguridad fotobiológica-IEC 62471	• Risk Group 1; RG1 • 1 類危險 (低危) • Grupo de riesgo 1	
Luminaire Efficacy 燈具效率 La eficacia de la luminaria	100 Lm/w(2700K), 120 Lm/w(5000K),	110 Lm/w(3000K), 120 Lm/w(6500K), 120 Lm/w(4000K),
LED Source Luminous Efficacy LED光源光效 Fuente luminosa LED Eficacia	130 Lm/w(2700K), 150 Lm/w(5000K),	140 Lm/w(3000K), 150 Lm/w(6500K), 150 Lm/w(4000K),
Housing materials-外殼材料 Materiales de la carcasa	Polycarbonate Body and Anti UV Opal diffuser and Aluminium reflector PC 燈體, 抗紫外線乳白擴散器和內部鋁反射器 Cuerpo de policarbonato y difusor anti-UV Opal y reflector de aluminio.	
Operating Temperature Range / 工作溫度範圍 Rango de temperatura de función ambiente	-30 °C / +50 °C	
Operating Humidity -工作濕度 Humedad de funcionamiento	0~90%, non-condensing-不結霜 sin condensación	
Ingress Protection-防護等級 Protección de ingreso	IP20	
Comply Testing Standard 符合測試標準 Cumplir el estándar de prueba	LED Luminaires: IEC/ EN 60598-1 / EN 60598-2-1 / EN 62031 / EN 62493 / IEC/EN 62471 / IEC 60598-2-22 / IEC 62031 EN 55015 / EN 61000-3-2 / EN 61000-3-3 / EN 61547 / IEC 62262 / IEC 60529 / IEC TR62778 Luminaries Performance: IEC 62722-1 / IEC 62722-2-1 RoHS LED Driver: EN 55015 / EN 61000-3-2 / EN 61347-1 / EN 61347-2-13 / EN 61547 / EN 62384	

Certification-認證-Certificación



Project	Fixture#	Date
		Firm



## Ordering Information

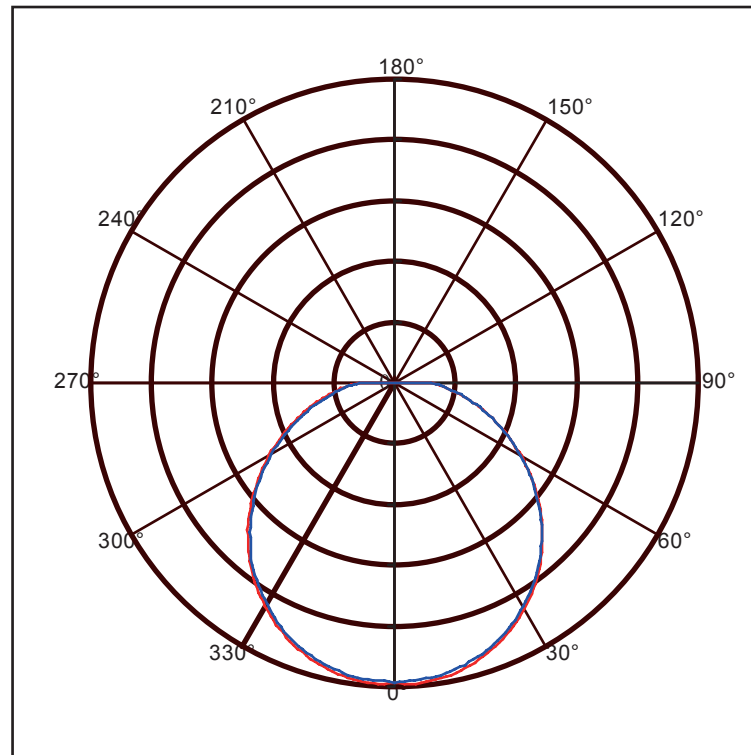
Choose the option that suits your need and write its corresponding code on the appropriate line to form the product code.

Example product code: [DYNON-23W](#)

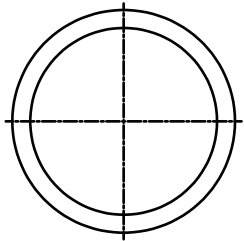
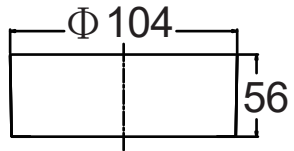
DYNON - - \_\_\_\_\_  
POWER  
CONSUMPTION

POWER CONSUMPTION	
Code	Description
<a href="#">6W</a>	6W @ Dia 104mm
<a href="#">9W</a>	9W @ Dia 104mm
<a href="#">11W</a>	11W @ Dia 150mm
<a href="#">15W</a>	15W @ Dia 150mm
<a href="#">15W</a>	15W @ Dia 170mm
<a href="#">18W</a>	18W @ Dia 170mm
<a href="#">20W</a>	20W @ Dia 213mm
<a href="#">23W</a>	23W @ Dia 213mm

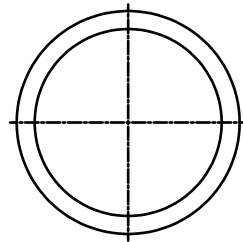
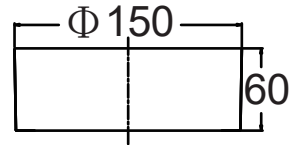
# BEAM ANGLE



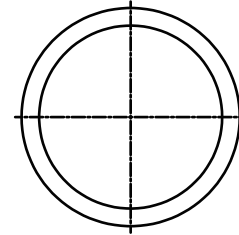
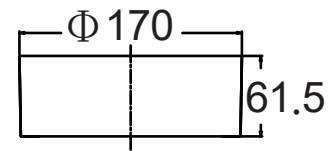
# Technical Drawing



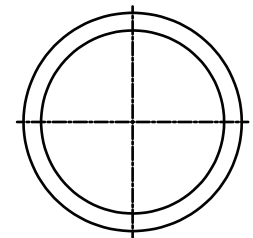
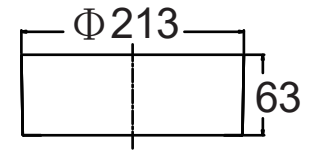
6W & 9W



11W & 15W



15W & 18W



20W & 23W

Unit: mm