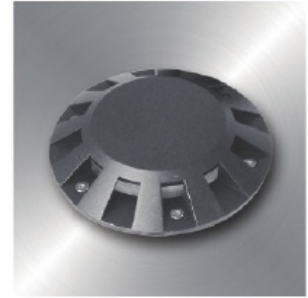
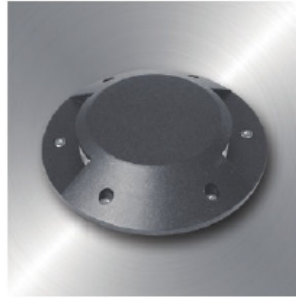
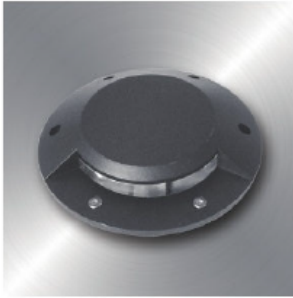
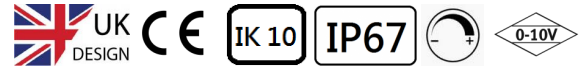





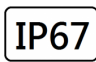


INDICA



LED in-ground luminaires:

- Housing: Extrusion aluminium housing with corrosion -resistance powder coating and die-cast aluminium cover.
- Anti-glare and Anti-UV PMMA Lens
- #316 Stainless Steel Screw and Anti-aging Gasket
- Ingress Protection: IP67 and Mech impact protection: IK10

Technical Data

Luminaire Type 安裝方式 Tipo de luminaria	Recessed In-Ground Type 內嵌式地埋燈 Empotrada en el suelo del Tipo
Power Consumption Max 燈具功率 Consumo de energía Max	Dia 105mm • Single-Window Cover : 1W Double-Window Cover : 2W Twelve -Window Cover : 5W Dia 170mm • Single-Window Cover : 2W Double-Window Cover : 4W Twelve -Window Cover : 12W Dia 210mm • Single-Window Cover : 4W Double-Window Cover : 6W Twelve -Window Cover : 14W
Input Voltage 輸入電壓 Voltaje de entrada	AC220-240V 50/60HZ
LED Driver Type LED 驅動款式 Tipo de controlador LED	Integrated-type or Remote-type LED Driver--Refer to LED driver specification 請參閱LED 驅動器規格 Consulte la especificación de controlador de LED 1. ON/OFF Switch AC220-240V 50/60HZ @ Integrated-type 2. 1-10V Dimming Driver AC100-240V 50/60HZ
Control Protocol 控制協議 Protocolo de Control	1-10V
Beam Angle 光束角 ángulo de haz	• Single-Window 單面出光 Ventana única • Double-Window 雙面出光 Ventana doble • Twelve -Window 12面出光 Doce ventanas
Light Source Brand/光源品牌 Fuente de luz de marca	CREE
"Lumen Maintenance LM-80 Reported by TM-21"	L70(10k) > 60,000 hrs
LED Life/LED 壽命 La vida del LED	>60,000 hours
Color Temperature / 色溫 / Temperatura del color	2700K / 3000K / 4000K / 5000K / 6500K
Color Rendering Index/顯色指數 Índice de reproducción cromática	• >80 • >90
MacAdam Ellipses Binning 麥克亞當橢圓分級 Mac Adam binning elipse	Standard Deviation Colour Matching < 3 SDCM 標準偏差配色 < 3 SDCM Coincidencia de color estándar Desviación < 3 SDCM
Luminaire Efficacy 燈具效率 La eficacia de la luminaria	• 60 Lm/w(2700K), 60 Lm/w(3000K), 65 Lm/w(4000K), • 70 Lm/w(5000K), 70 Lm/w(6500K),
LED Source Luminous Efficacy LED 光源光效 Fuente luminosa LED Eficacia	• 120 Lm/w(2700K), 120 Lm/w(3000K), 130 Lm/w(4000K), • 140 Lm/w(5000K), 140 Lm/w(6500K),
Housing materials/外殼材料 Materiales de la carcasa	Die cast aluminium and Anti UV PMMA Lens 壓鑄鋁和防紫外線PMMA鏡片 Aluminio fundido a presión y lente anti UV PMMA
Housing Color/ 外殼顏色 /Color de la carcasa	Polyester and anti-corrosion powder Coating :Black / Gray 防腐粉末塗料: 黑色燈身 / 灰色燈身 Revestimiento en polvo de poliéster y anticorrosión: negro / gris
Operating Temperature Range / 工作溫度範圍 Rango de temperatura de funcionamiento	-20 °C / +55 °C
Operating Humidity -工作濕度 Humedad de funcionamiento	0~90%, non-condensing-不結霜 sin condensación
Ingress Protection/ 防護等級 Protección de ingreso	IP67
Dimension/尺寸 Dimensión	Refer to Technical Drawing 參考技術圖紙Consulte el dibujo técnico
Mech impact protection 機械衝擊保護 Protección contra impactos mecánicos	IK10
Weight bearing 承重Carga de peso	3 Nm
Comply Testing Standard 符合測試標準 Cumplir el estándar de prueba	LED Luminaires: IEC 60598-1 / IEC 60598-2-13 / IEC TR62778 IEC62471 (RG1); IEC 62031; EN62493 RoHS LED Driver: IEC/EN 61347-1; IEC/EN 61347-2-13; IEC/EN 62384; IEC/EN 61000-3-2; IEC/EN 61000-3-3; IEC/EN 61574; EN 55015
Certification-認證-Certificación	     

Project	Fixture#	Date
		Firm

Ordering Information

Choose the option that suits your need and write its corresponding code on the appropriate line to form the product code.

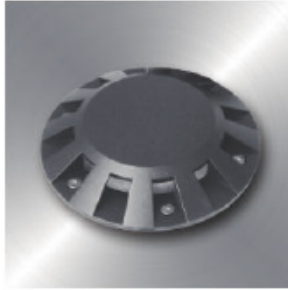
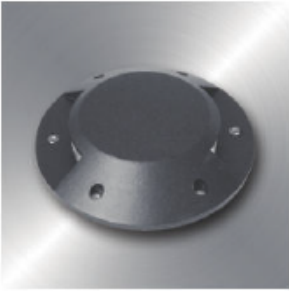
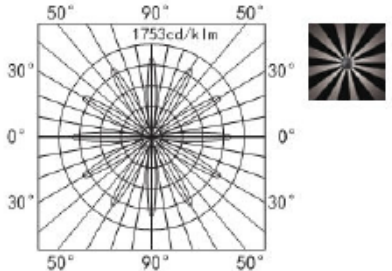
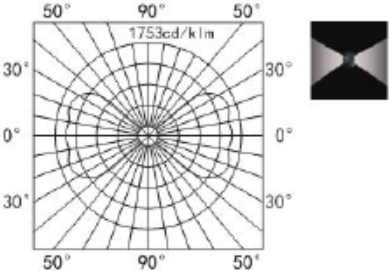
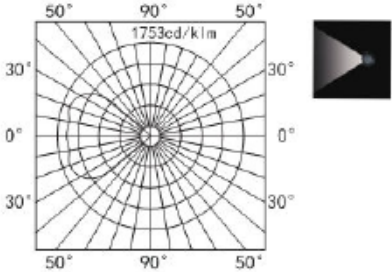
Example product code: [INDICA-6W](#)

INDICA - - _____
Power Consumption

Power Consumption	
Code	Description
1W	Dia 105mm Single-Window Cover : 1W
2W	Dia 105mm Double-Window Cover :2W
5W	Dia 105mm Twelve -Window Cover :5W
2W	Dia 170 mm Single-Window Cover : 2W
4W	Dia 170mm Double-Window Cover :4W
12W	Dia 170mm Twelve -Window Cover :12W
4W	Dia 210 mm Single-Window Cover : 4W
6W	Dia 210mm Double-Window Cover :6W
14W	Dia 210mm Twelve -Window Cover :14W

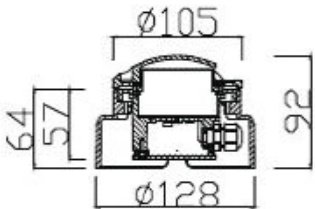


BEAM ANGLE



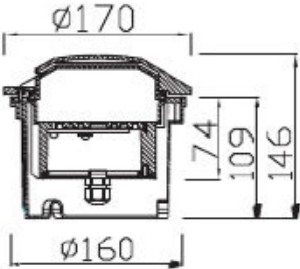
Technical Drawing

1W- 5 W



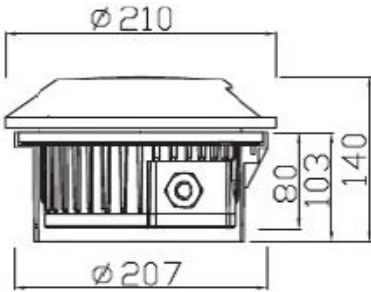
kg 0.46

2W- 12W



kg 1.19

4W- 6W



kg 2.16



Unit: mm