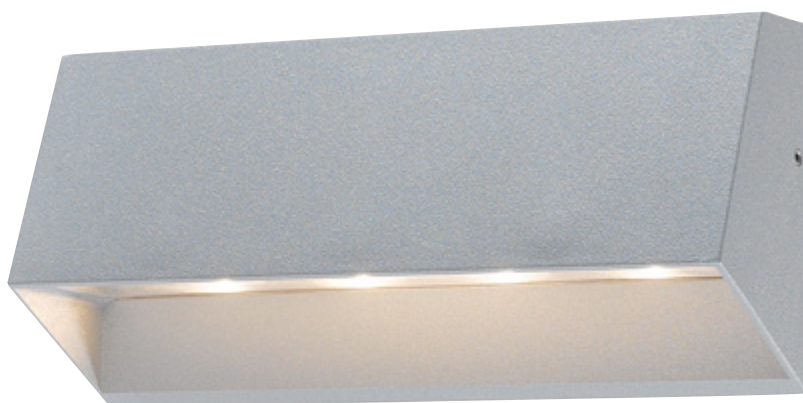
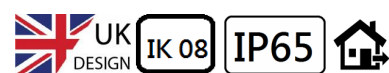



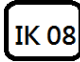
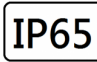

PACIFIC-S

4W IP65



- Die-cast aluminium. separate electric housing with Opal Anti UV Polycarbonate diffuser
- Surface anti-ageing electrostatic spray processing,super resistance to corrosion.
- Wall mounting, easy installation with removable back plate.
- IP65, IK08,

Technical Data

Luminaire Type-安裝方式Tipo de luminaria	Wall Mounted Type壁掛式 Tipo montado en la pared
Dimension-尺寸-Dimensión	L: 220 x H: 100 x D: 60mm
Power Consumption Max-燈具功率 Consumo de energía Max	4W
Input Voltage-輸入電壓-Voltaje de entrada	AC220-240V 50/60HZ
LED Driver Type LED驅動款式 Tipo de controlador LED	Integrated-type LED Driver--Refer to LED driver specification 請參閱LED驅動器規格 Consulte la especificación de controlador de LED 1. ON/OFF Switch AC220-240V 50/60HZ
Light Source Brand-光源品牌-Fuente de luz de marca	CREE
Beam Angle光束角ángulo de haz	Asymmetric Beam Angle 不對稱光束角Ángulo de haz asimétrico
"Lumen Maintenance LM-80 Reported by TM-21"@25degree	L70(10k) > 63,500 hrs
LED Life-LED壽命-La vida del LED	>60,000 hours
Color Temperature -色溫 Temperatura del color	2700K / 3000K / 4000K/ 5000K / 6500K
Color Rendering Index-顯色指數 Índice de reproducción cromática	> 80
MacAdam Ellipses Binning 麥克亞當橢圓分級 Mac Adam binning ellipse	Standard Deviation Colour Matching < 3 SCDM 標準偏差配色 < 3 SCDM Coincidencia de color estándar Desviación
Luminaire Efficacy燈具效率 La eficacia de la luminaria	50lm/w(2700K), 50lm/w(3000K), 60lm/w(4000K), 65lm/w(5000K), 65lm/w(6500K)
LED Source Luminous EfficacyLED光源光效 Fuente luminosa LED Eficacia	130lm/w(2700K), 130lm/w(3000K), 140m/w(4000K), 150lm/w(5000K), 150lm/w(6500K)
Housing materials-外殼材料 Materiales de la carcasa	Die-cast aluminum and Opal Anti UV Polycarbonate diffuser 壓鑄鋁和 乳白 Anti UV 抗紫外線擴散罩 Aluminio inyectado y Policarbonato Opal Anti UV
Housing Color外殼顏色 color de la carcasa	Polyester powders Coating--Matte Black RAL9005 / Grey RAL9006 / Matte White RAL9003 聚酯粉末塗料—啞光黑 RAL 9005 / 灰色 RAL 9006 / 啞光白 RAL 9003 Revestimiento en polvo de poliéster: negro mate RAL 9005 / gris RAL 9006 / blanco mate RAL 9003
Ingress Protection-防護等級 Protección de ingreso	IP65
Mech impact protection 機械衝擊保護 Protección contra impactos mecánicos	IK08
Operating Temperature Range / 工作溫度範圍 Rango de temperatura de funcionamiento	-30 °C / +50 °C
Operating Humidity -工作濕度 Humedad de funcionamiento	0~90%, non-condensing-不結霜 sin condensación
Net Weight淨重Peso Neto	0.7 KG
Certification-認證-Certificación	   

Project	Fixture#	Date
		Firm

Ordering Information

Choose the option that suits your need and write its corresponding code on the appropriate line to form the product code.

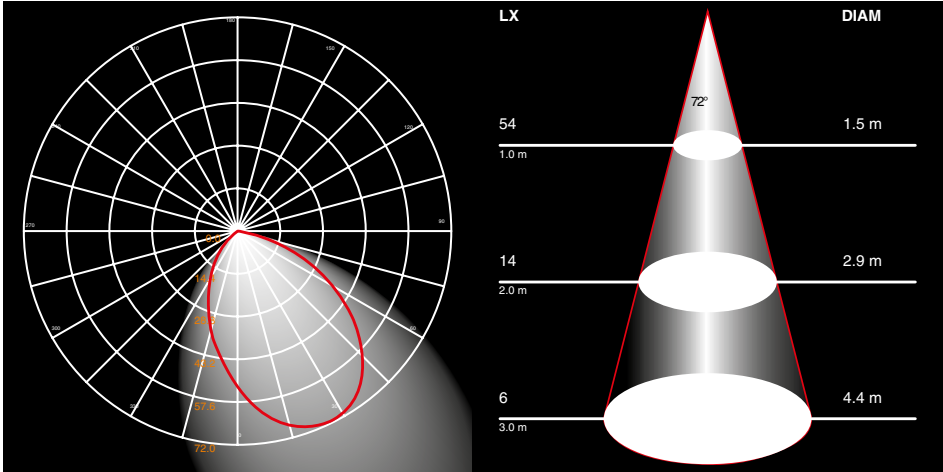
Example product code: [PACIFIC-4W](#)

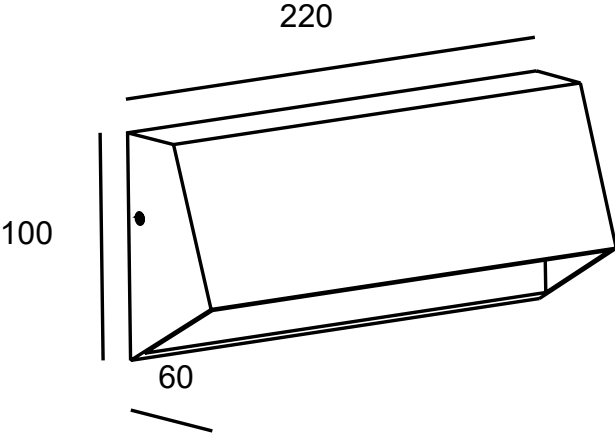
PACIFIC-S - 4W
Power Consumption

Power Consumption	
Code	Description
4W	4W



BEAM ANGLE





Unit: mm