

BATESA- Emergency Batten



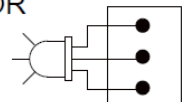
Emergency Batten for AC LED T5 & LED T8 & Sensor LED Tube Up to 24W



Prismatic Diffuser

- For AC LED T5 & LED T8 & Sensor LED Tube & AC Luminaires Emergency Application
- Suitable for Maintained or Non-maintained luminaires.
- Electronic charge system.
- Deep discharge protection.
- Short-circuit proof battery connection.
- Automatic shutdown protection if the LED load is out of range.
- Simple wiring / installation.
- 2 hours or 3 hours emergency backup with either Ni-MH battery or Ni-Cd battery
- Provided with a IP20 robust steel iron remote box or IP65 Waterproof Die-casted Aluminum Box
- Provided with a LED for indication when battery charge is in process.
- Tested in accordance with latest local requirement PPA/104(A) (4th Revision).

LED INDICATOR



- GREEN - FULLY CHARGED
- RED - CHARGING
- YELLOW - FAULT

Product Specification				
Emergency Power Pack Model No. 應急電池系統型號	SLPP-03-2	SLPP-03-3	SLPP-06-2	SLPP-06-3
Emergency Kit Model No. (IP20 Metal Box) 應急系統型號(IP20金屬盒)	SLK-03-2	SLK-03-3	SLK-06-2	SLK-06-3
IP66 Emergency Kit Model No. (IP66 Die-casted Aluminum Box) IP66 應急系統型號(IP66 防水壓鑄鋁盒)	SLKWP-03-2	SLKWP-03-3	SLKWP-06-2	SLKWP-06-3
Emergency Batten Model No. (Steel Batten) 應急支架型號(鐵支架)	BATESA-03-2	BATESA-03-3	BATESA-06-2	BATESA-06-3
IP66 Waterproof Emergency Batten Model No. IP66應急防水支架型號	BAWATY-03-2	BAWATY-03-3	BAWATY-06-2	BAWATY-06-3
Inverter Model No.: 應急轉換器型號:	E-SOLO			
Remote Metal Kit 外置應急電池盒	IP20 Metal Box金屬盒: TBA IP66 Waterproof Die-casted Aluminum Box IP66 防水壓鑄鋁盒: TBA			
IP20 Batten: Built-in Emergency Battery Kit IP20 支架: 內置應急電池組件	LED T5 : 575x58x44mm	875x58x44mm	1175x58x44mm	1475x58x44mm
	LED T8 : 625x58x44mm	925x58x44mm	1230x58x44mm	1530x58x44mm
IP66 Batten: Built-in Emergency Battery Kit IP66 支架: 內置應急電池組件	Single Tube : 655x90x92mm	1265x90x92mm	1565x90x92mm	
	Twin Tube : 655x130x92mm	1265x130x92mm	1565x130x92mm	
LED Luminaire AC Power LED燈具功率	10W Max	10W Max	20W Max	20W Max
LED Tube Emergency Mode Output Power Max LED 燈管應急輸出最大功率	3W	3W	6W	6W
LED Tube Emergency Mode Lumen Output % LED 燈管應急輸出百分比	(3W / LED Tube Power/0.8) %	(3W / LED Tube Power /0.8) %	(6W / LED Tube Power/0.8) %	(6W / LED Tube Power/0.8) %
Battery Duration應急時間	2 hours backup	3 hours backup	2 hours backup	3 hours backup
Battery Capacity 電池容量	9.6V 1.2Ah		9.6V 1.6Ah	9.6V 2.2Ah
Input Voltage / 輸入電壓	220 - 240V AC +/-5%, 50/60Hz PF>0.95 THD<20			
Output Voltage / 輸出電壓	220VAC / 250VDC (Max.)			
Changeover Time 應急啟動時間	< 0.25 second			
Battery Type 電池類型	Ni -MH for Standad or Ni-Cd battery is available upon request 標準鎳氫電池, 鎳鎘電池可應要求提供			
Luminaires Type 照明方式	Maintained / Non Maintained Typ 長明式 / 後備式			
Battery Recharge Duration 電池充電時間	Less than 12 hours 12小時			
Class of Insulation 絕緣等級	Class one Earthing 一級			
Ambient Temperature Range 環境溫度範圍	-10°C to +50°C			
Protection 保護	SHORT CIRCUIT / OVER VOLTAGE /短路/電壓過高			
Compliance 符合標準	BS EN 60598-2-22, BS EN 61347-2-7, BS 5266-1, FSD PPA 104A (4th Revision)			

Product Specification				
Emergency Power Pack Model No. 應急電池系統型號	SLPP-10-2	SLPP-10-3	SLPP-12-2	SLPP-12-3
Emergency Kit Model No (IP20 Metal Box) 應急系統型號(IP20金屬盒)	SLK-10-2	SLK-10-3	SLK-12-2	SLK-12-3
IP66 Emergency Kit Model No. (IP66 Die-casted Aluminum Box) IP66 應急系統型號(IP66 防水壓鑄鋁盒)	SLKWP-10-2	SLKWP-10-3	SLKWP-12-2	SLKWP-12-3
Emergency Batten Model No. (Steel Batten) 應急支架型號(鐵支架)	BATESA-10-2	BATESA-10-3	BATESA-12-2	BATESA-12-3
IP66 Waterproof Emergency Batten Model No. IP66應急防水支架型號	BAWATY-10-2	BAWATY-10-3	BAWATY-12-2	BAWATY-12-3
Inverter Model No.: 應急轉換器型號:	E-SOLO			
Remote Metal Kit 外置應急電池盒	IP20 Metal Box金屬盒: TBA IP66 Waterproof Die-casted Aluminum Box IP66 防水壓鑄鋁盒: TBA			
IP20 Batten: Built-in Emergency Battery Kit IP20 支架: 內置應急電池組件	LED T5 : 575x58x44mm	875x58x44mm	1175x58x44mm	1475x58x44mm
	LED T8 : 625x58x44mm	925x58x44mm	1230x58x44mm	1530x58x44mm
IP66 Batten: Built-in Emergency Battery Kit IP66 支架: 內置應急電池組件	Single Tube : 655x90x92mm	1265x90x92mm	1565x90x92mm	
	Twin Tube : 655x130x92mm	1265x130x92mm	1565x130x92mm	
LED Luminaire AC Power LED燈具功率	22W Max	22W Max	24W Max	24W Max
LED Tube Emergency Mode Output Power Max LED 燈管應急輸出最大功率	10W	10W	12W	12W
LED Tube Emergency Mode Lumen Output % LED 燈管應急輸出百分比	(10W / LED Tube Power / 0.8) %	(10W / LED Tube Power / 0.8) %	(12W / LED Tube Power / 0.8) %	(12W / LED Tube Power / 0.8) %
Battery Duration 應急時間	2 hours backup	3 hours backup	2 hours backup	3 hours backup
Battery Capacity 電池容量	9.6V 2.8Ah	9.6V 3.6Ah	9.6V 3.6Ah	9.6V 4.5Ah
Input Voltage / 輸入電壓	220 - 240V AC +/-5%, 50/60Hz PF>0.95 THD<20			
Output Voltage / 輸出電壓	220VAC / 250VDC (Max.)			
Changeover Time 應急啟動時間	< 0.25 second			
Battery Type 電池類型	Ni -MH for Standad or Ni-Cd battery is available upon request 標準鎳氫電池, 鎳鎘電池可應要求提供			
Luminaires Type 照明方式	Maintained / Non Maintained Typ 長明式 / 後備式			
Battery Recharge Duration 電池充電時間	Less than 12 hours 12小時			
Class of Insulation 絕緣等級	Class one Earthing 一級			
Ambient Temperature Range 環境溫度範圍	-10°C to +50°C			
Protection 保護	SHORT CIRCUIT / OVER VOLTAGE 短路/電壓過高			
Compliance 符合標準	BS EN 60598-2-22, BS EN 61347-2-7, BS 5266-1, FSD PPA 104A (4th Revision)			

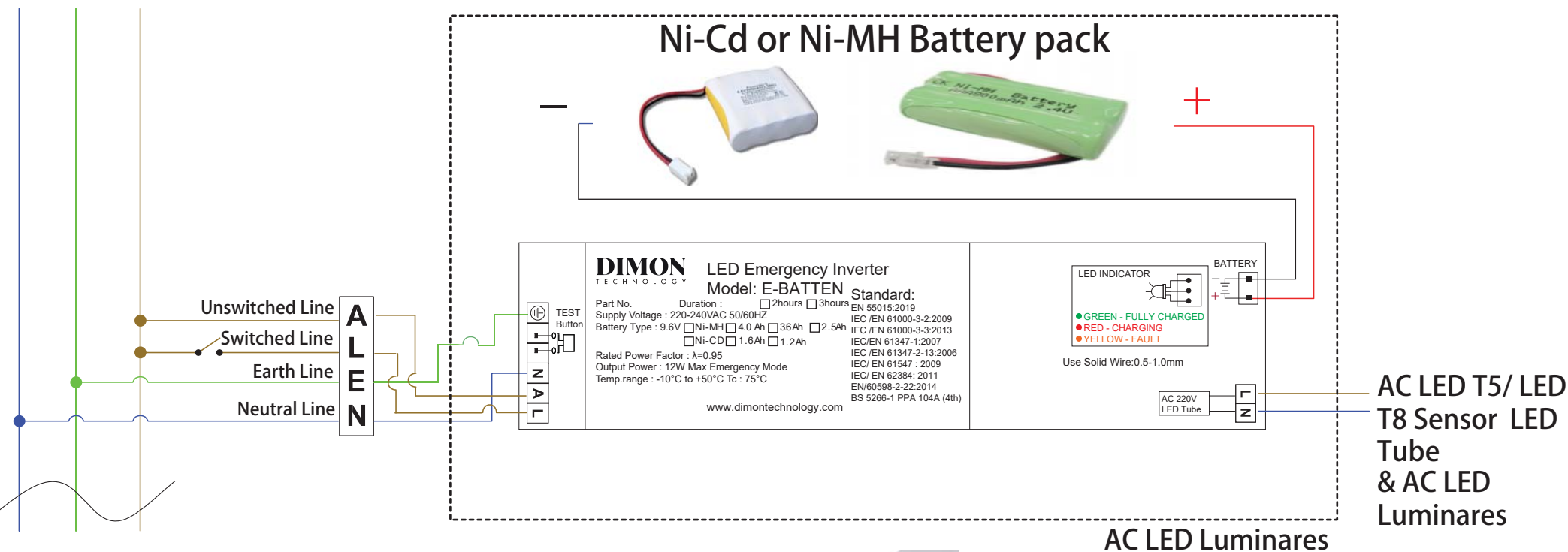
E-SOLO

30% & 50% Output LED Emergency Batten For AC LED T5 & LED T8 & Sensor LED Tube & AC LED Luminaires

30 & 50% Output wiring with general lighting switch diagram

30% & 50% 輸出接駁燈制開關接線圖

N E L



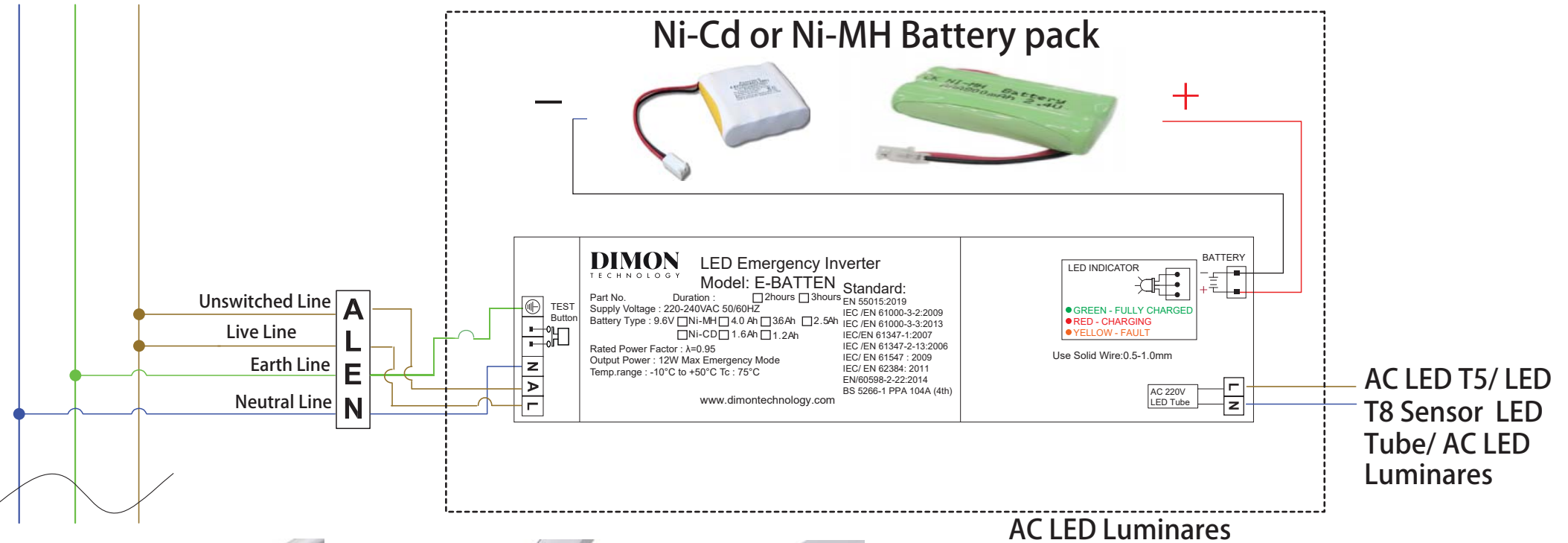
E-SOLO

30% & 50% Output LED Emergency Batten For AC LED T5 & LED T8 & Sensor LED Tube & AC LED Luminaires

30 & 50% Output wiring diagram (Maintained Type)

30% & 50% 輸出接線圖(長明式)

N E L



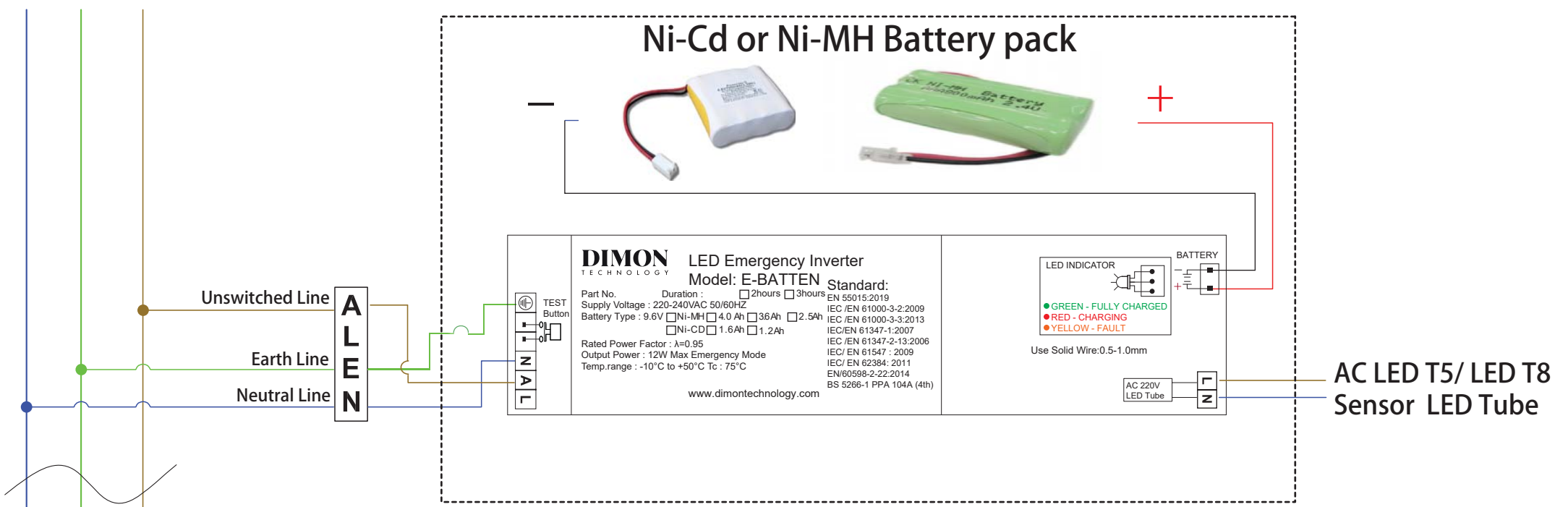
E-SOLO

30% & 50% Output LED Emergency Batten For AC LED T5 & LED T8 & Sensor LED Tube&AC LED Luminaires

30 & 50% Output wiring diagram (Non-Maintained Type)

30% & 50% 輸出接線圖(後備式)

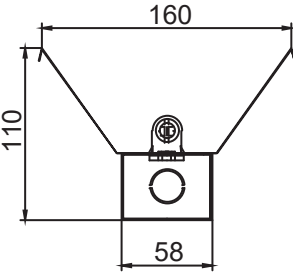
N E L



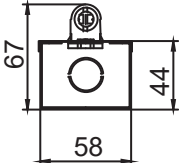
Technical Drawing

T5 Batten

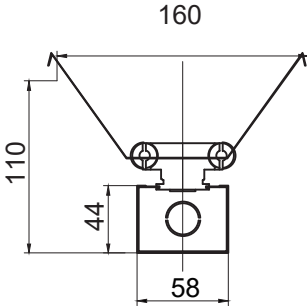
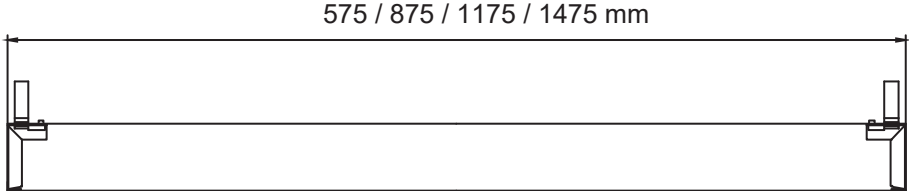
Metal Reflector V shape



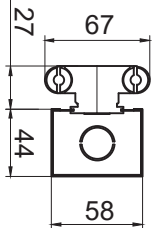
Single Tube with reflector



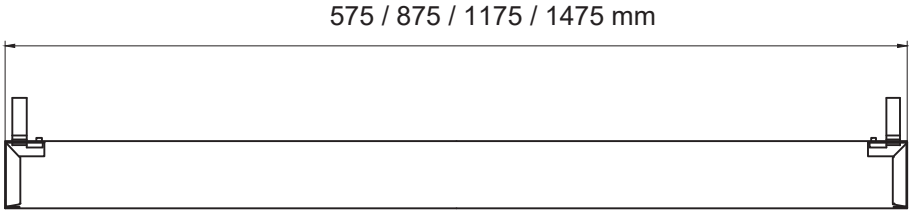
Single Tube



Twin Tube with reflector



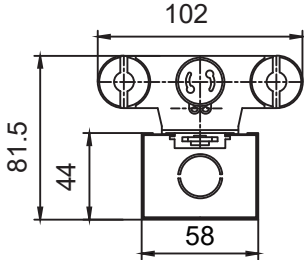
Twin Tube



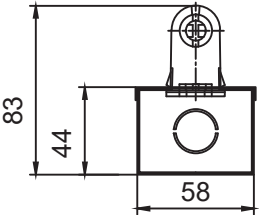
Unit: mm

Technical Drawing

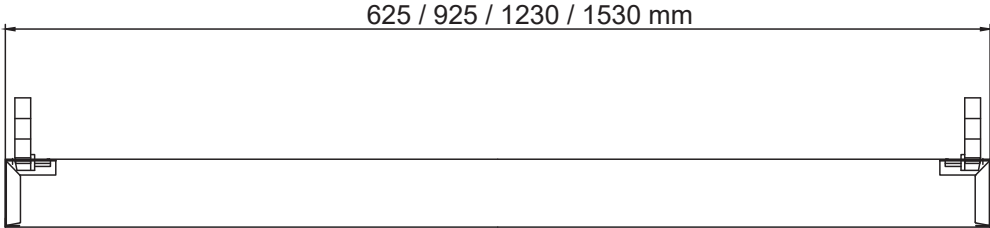
T8 Batten



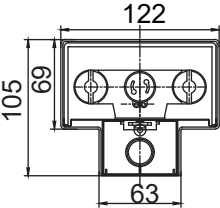
Twin Tube



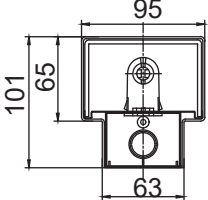
Single Tube



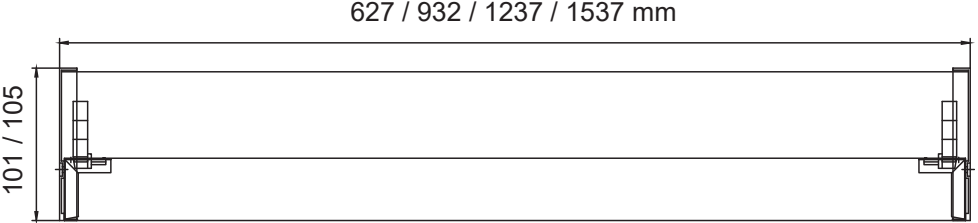
Polycarbonate Prismatic Diffuser



Twin Tube



Single Tube



Unit: mm