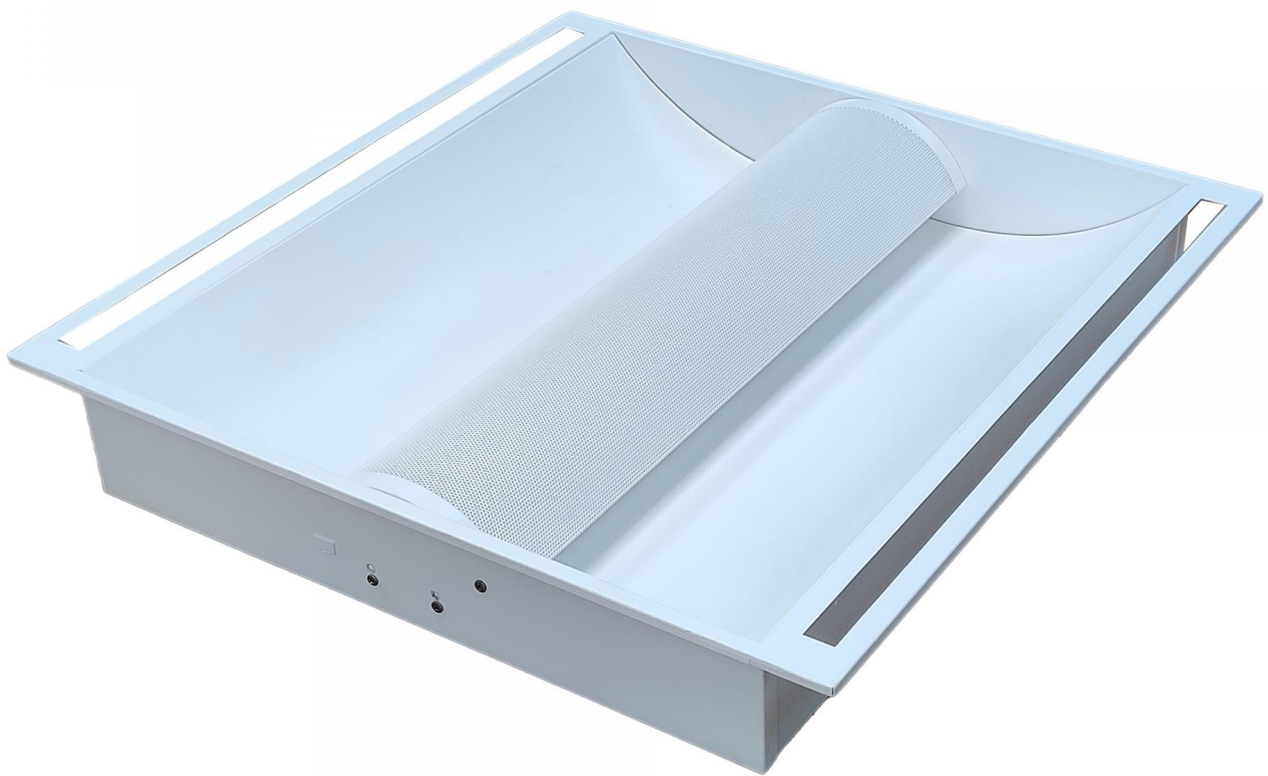
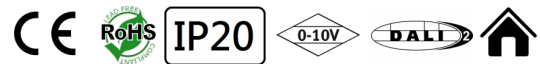




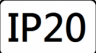



LNOVO

Direct-Indirect LED Troffer



- Luminaire constructed with 0.6mm thickness cold rolled steel to resist bending during installation;
- All steel surface are painted after fabrication with high gloss backed white matte powder;
- Milky Polycarbonate diffuser and Metal Hole Mesh diffuser options are available;
- Air-Slot or Non Air-Slot versions available;
- Application Areas: office room, meeting room, classroom, shopping mall, supermarket, station etc.

Technical Data

| | |
|--|--|
| Mounting Type / 安裝方式 / Tipo de luminaria | Recessed Mount / 暗裝式燈具 / Montaje empotrado |
| Dimension / 尺寸 / Dimensión | L 595 x W 595 x H 100mm L 1195 x W 595 x H 100mm |
| Power Consumption with LED Driver LED燈具包括LED驅動電源功率 Consumo de energía con controlador de LED | 27W 30W 36W @ L 595 x W 595 x H 100mm 36W 40W 48W 60W 72W @ L 1195 x W 595 x H 100mm |
| Input Voltage / 輸入電壓 Voltaje de entrada | 220-240V / AC 50/60Hz |
| LED Driver Type LED驅動款式 Tipo de controlador LED | Integrated Constant Current LED Driver / 內置恆流 LED 驅動器 Controlador LED de corriente constante integrado 1. ON/OFF Switch AC220-240V 50/60HZ 2. 0/1-10V Dimming Driver AC220-240V 50/60HZ 3. DALI Dimming Driver AC220-240V 50/60HZ 4. ZIGBEE Wireless Control AC220-240V 50/60HZ 5. Emergency Battery Backup >2 hours or >3 hours (Integral type) |
| LED Driver Features / 驅動特性 Características del controlador LED | Power Factor: >0.95 Total Harmonic Distortion THD <20% |
| Control Protocol / 控制協議 / Protocolo de Control | 0/1-10V / DALI / ZIGBEE Wireless Control |
| Light Source Brand / 光源品牌 / Fuente de luz de marca | Lumileds / Osram |
| Lumen Maintenance LM-80 Reported by TM-21 | L70 > 54,000 hrs |
| LED Life / LED壽命 / La vida del LED | >100,000 hours |
| Color Temperature -色溫 Temperatura del color | 2700K / 3000K / 4000K / 5000K / 6500K |
| Color Rendering Index / 顯色指數 Índice de reproducción cromática | >80 >90 |
| MacAdam Ellipses Binning 麥克亞當橢圓分級 Mac Adam binning ellipse | Standard Deviation Colour Matching < 3 SDCM 標準偏差配色 < 3 SDCM Coincidencia de color estándar Desviación < 3 SDCM |
| Beam Angle / 光束角 / ángulo de haz | 120° |
| Luminaire Efficacy / 燈具效率 La eficacia de la luminaria | CR180 (PC Diffuser) : 95 Lm/w (2700K) 95 Lm/w (3000K) 100 Lm/w (4000K) 105 Lm/w (5000K/6500K) CR190 (PC Diffuser) : 80 Lm/w (2700K) 85 Lm/w (3000K) 90 Lm/w (4000K) 95 Lm/w (5000K/6500K) If Metal Hole Mesh Diffuser is used, the efficiency is reduced by about 20%. |
| LED Source Luminous Efficacy / LED光源光效 Fuente luminosa LED Eficacia | CR180 : 130 Lm/w (2700K) 135 Lm/w (3000K) 140 Lm/w (4000K) 145 Lm/w (5000K/6500K) CR190 : 120 Lm/w (2700K) 125 Lm/w (3000K) 130 Lm/w (4000K) 135 Lm/w (5000K/6500K) |
| Housing materials / 外殼材料 Materiales de la carcasa | Steel sheet with Milky Polycarbonate Diffuser or Metal Hole Mesh Diffuser (Lower efficiency) 鋼板, 乳白色聚碳酸酯擴散器或金屬網擴散器 (較低效率) Lámina de acero con difusor de policarbonato lechoso o difusor de malla metálica (baja eficiencia) |
| Housing Color / 外殼顏色 color de la carcasa | White coating / 白色塗層 / Recubrimiento blanco |
| Ingress Protection / 防護等級 Protección de ingreso | IP20 |
| Operating Temperature Range / 工作溫度範圍 Rango de temperatura de funcionamiento | -20 °C / +40 °C |
| Operating Humidity / 工作濕度/Humedad de funcionamiento | 0~90%, non-condensing-不結霜sin condensación |
| Comply Testing Standard 符合測試標準 Cumplir el estándar de prueba | LED Luminaries: LVD: IEC/EN 60598-1;EN / IEC/EN 60598-2-1;IEC62471;IEC/EN 62031; IEC/EN 62493 ; IEC/EN 62471 (Risk Group 1) LED Driver: IEC/EN 61347-1; IEC/EN 61347-2-13; IEC/EN 62384; IEC/EN 61000-3-2; IEC/EN 61000-3-3;IEC/EN61574;EN 55015 ; IEC /EN 62384 |
| Certification / 認證 / Certificación |       |

| | | |
|---------|----------|------|
| Project | Fixture# | Date |
| | | Firm |



Ordering Information

Choose the option that suits your need and write its corresponding code on the appropriate line to form the product code.

Example product code: [LNOVO-36W](#)

LNOVO - -

POWER
CONSUMPTION

| POWER CONSUMPTION | |
|---------------------|---|
| Code | Description |
| 27W | 27W @ 595x595x100mm |
| 30W | 30W @ 595x595x100mm |
| 36W | 36W @ 595x595x100mm or @ 1195x595x100mm |
| 40W | 40W @ 1195x595x100mm |
| 48W | 48W @ 1195x595x100mm |
| 60W | 60W @ 1195x595x100mm |
| 72W | 72W @ 1195x595x100mm |

Beam Angle

