


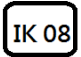
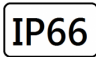
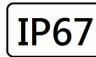



WEGE-M

W:44xH:35 Max 36W



Made by Die-cated aluminium & Temper Glass.
House finished with UV Resistant powder coating for Anti-corrosion Protection.
High-level mechanical impact protection IK08 and IP66 Ingress Protection.

Technical Data

Luminaire Type/ 安裝方式 Tipo de luminaria	Surface Mount and Adjustable Type-Adjustment Options ±90 tilt明裝±90度可調安裝腳 Tipo mount en superficie y ajustable
Power Consumption Max燈具最大功率 Consumo de energía Max	L: 500mm 9W 12W 18W L: 1000mm: 18W 24W 36W
Input Voltage / 輸入電壓 Voltaje de entrada	• DC24V • DC24V + DMX 512 Control
Control Protocol-控制協議 Protocolo de Control	• Integrated Decoder: DMX512 + DC24V • Remote LED Driver for 1-10V DALI
Pixels & DMX Channels @ 1000mm 像素和DMX 通道@ 1000mm Píxeles y canales DMX @ 1000mm	8 Pixel (8 DMX Channel @ Mono)
Beam Angle/光束角ángulo de haz	9° / 15° / 22° / 30° / 40° / 66° / 83° / 30° x 12° / 40° x 15° / 10 °x50°
Light Source Brand/光源品牌 Fuente de luz de marca	OSRAM LED
Photobiological safety-IEC 62471 / of Luminaire 光生物安全檢驗(IEC/EN 62471) 结果: Seguridad fotobiológica-IEC 62471	Risk Group 1; RG1 1 類危險 (低危) Grupo de riesgo 1
Color Temperature -色溫 Temperatura del color	2700K / 3000K / 4000K / 5000K / 6500K
Lumen Maintenance Reported by TM-21 TM-21光衰壽命@25°C Mantenimiento del lumen informado por TM-21 @25°C	L70 > 60,000 hrs
Color Rendering Index-顯色指數 Índice de reproducción cromática	>80 >90
MacAdam Ellipses Binning 麥克亞當橢圓分級 Mac Adam binning elipse	Standard Deviation Colour Matching < 3 SDCM 標準偏差配色 < 3 SDCM Coincidencia de color estándar Desviación < 3 SDCM
Luminaire Efficacy-燈具效率 La eficacia de la luminaria	• 75 Lm/w(2700K), 75 Lm/w(3000K), 80 Lm/w(4000K), • 85 Lm/w(5000K), 85 Lm/w(6500)
Luminaire Efficacy-燈具效率 La eficacia de la luminaria	• 120 Lm/w(2700K) 120 Lm/w(3000K) 125 Lm/w(4000K) • 130 Lm/w(5000K) 130 Lm/w(6500K)
Housing materials/外殼材料 Materiales de la carcasa	Die-Casted Aluminium and Aluminium Alloy and 4mm Tempered Glass 壓鑄鋁和鋁合金及4mm鋼化玻璃 Aluminio fundido a presión y aleación de aluminio y vidrio templado de 4 mm
Housing Color/ 邊框殼顏色 Color de la carcasa	Sand white RAL9003 / Sand black RAL9005 / Sand Grey RAL9006 沙白 RAL9003 / 沙黑 RAL9005 / 沙灰 RAL9006
Ingress Protection/ 防護等級 Protección de ingreso Blanco arena RAL9003 / Negro arena RAL9005 / Gris arena RAL9006	• IP66 • IP67
Mech impact protection 機械衝擊保護 Protección contra impactos mecánicos	IK08
Operating Temperature Range / 工作溫度範圍 Rango de temperatura de funcionamiento	-30 °C / +50 °C
Operating Humidity -工作濕度 Humedad de funcionamiento	0~100%, non-condensing-不結霜 sin condensación
Dimension/尺寸 Dimensión	Refer to Drawing 參考圖紙
Comply Testing Standard 符合測試標準 Cumplir el estándar de prueba	LED Luminaires: IEC/EN60598-1 ; EN60598-2-1 ; IEC/EN 62031 ; IEC/EN 62493; IEC TR62778 ; IEC62471; RoHS LED Driver: EN 55015 / EN 61000-3-2 / EN 61347-1 / EN 61347-2-13 / EN 61547
Certification-認證-Certificación	      

Project	Fixture#	Date
		Firm

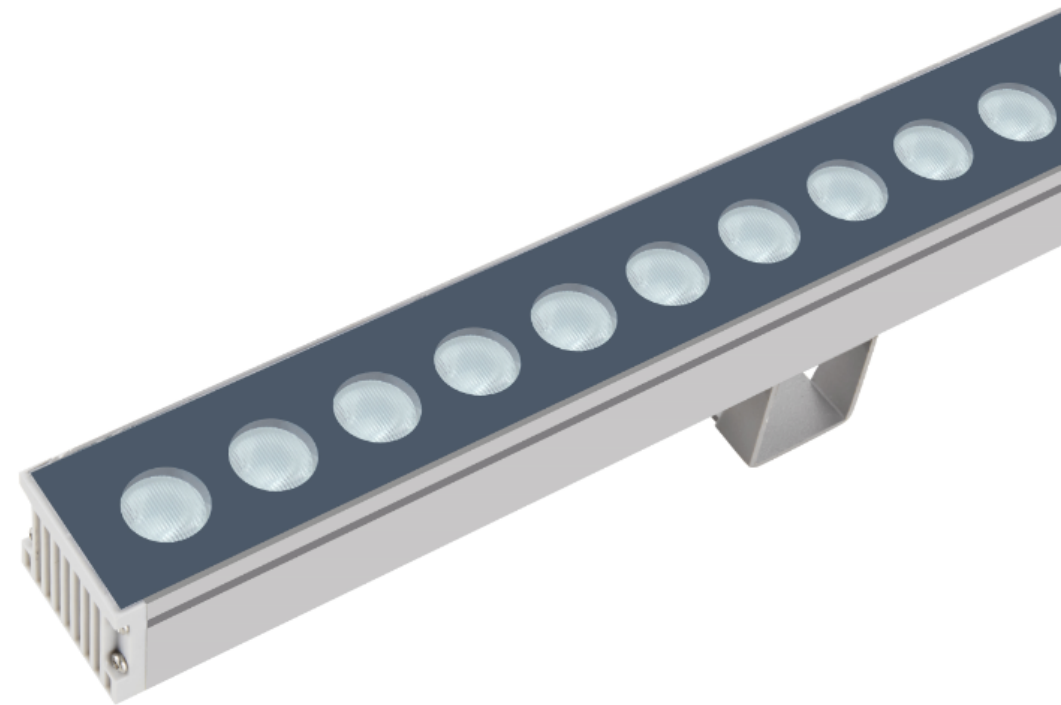
Ordering Information

Choose the option that suits your need and write its corresponding code on the appropriate line to form the product code.

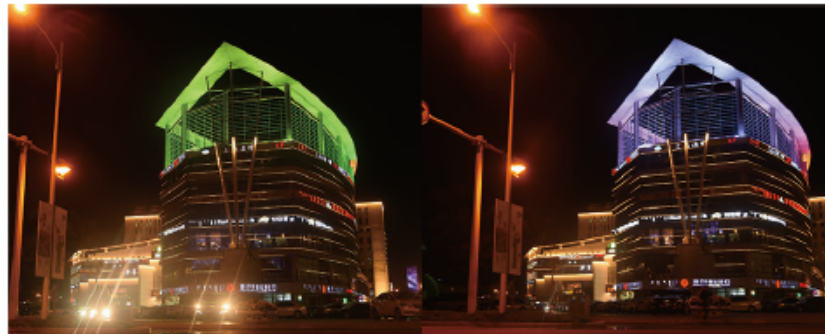
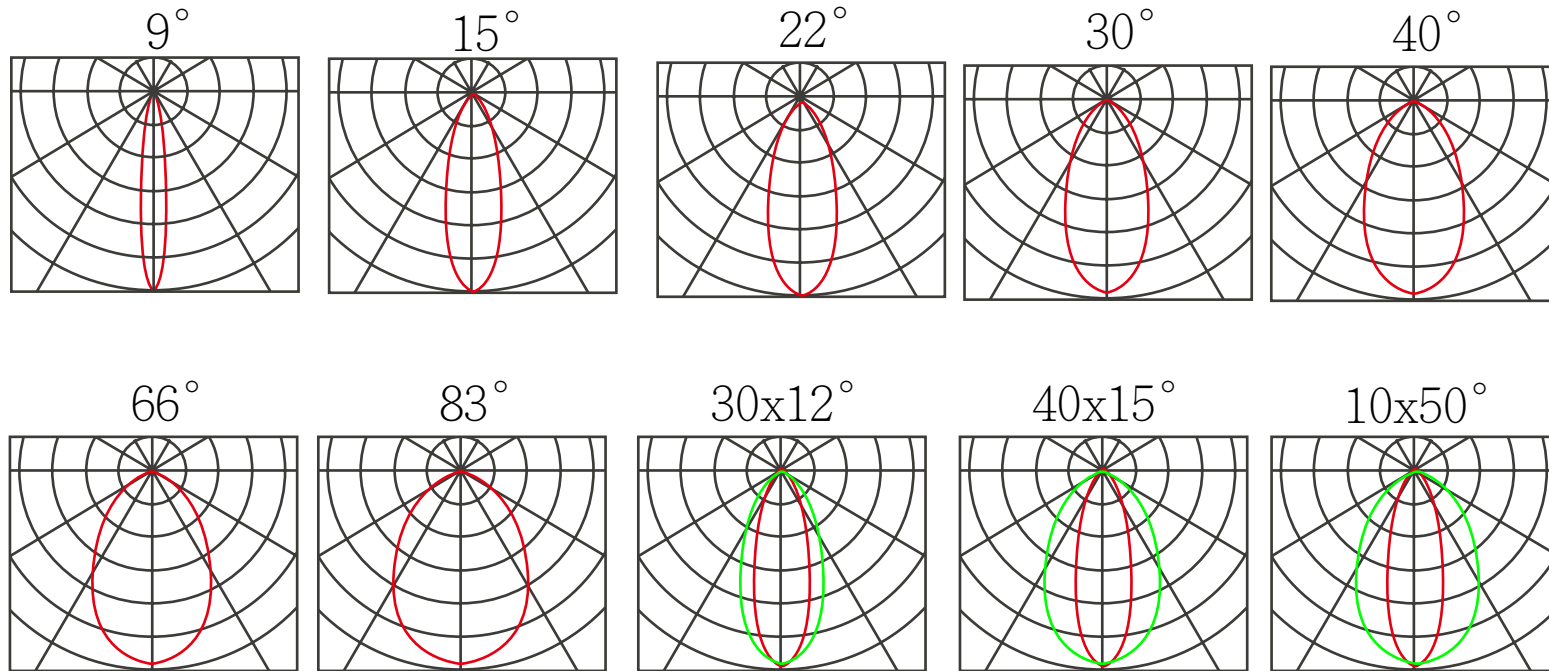
Example product code: [WEGE-36W](#)

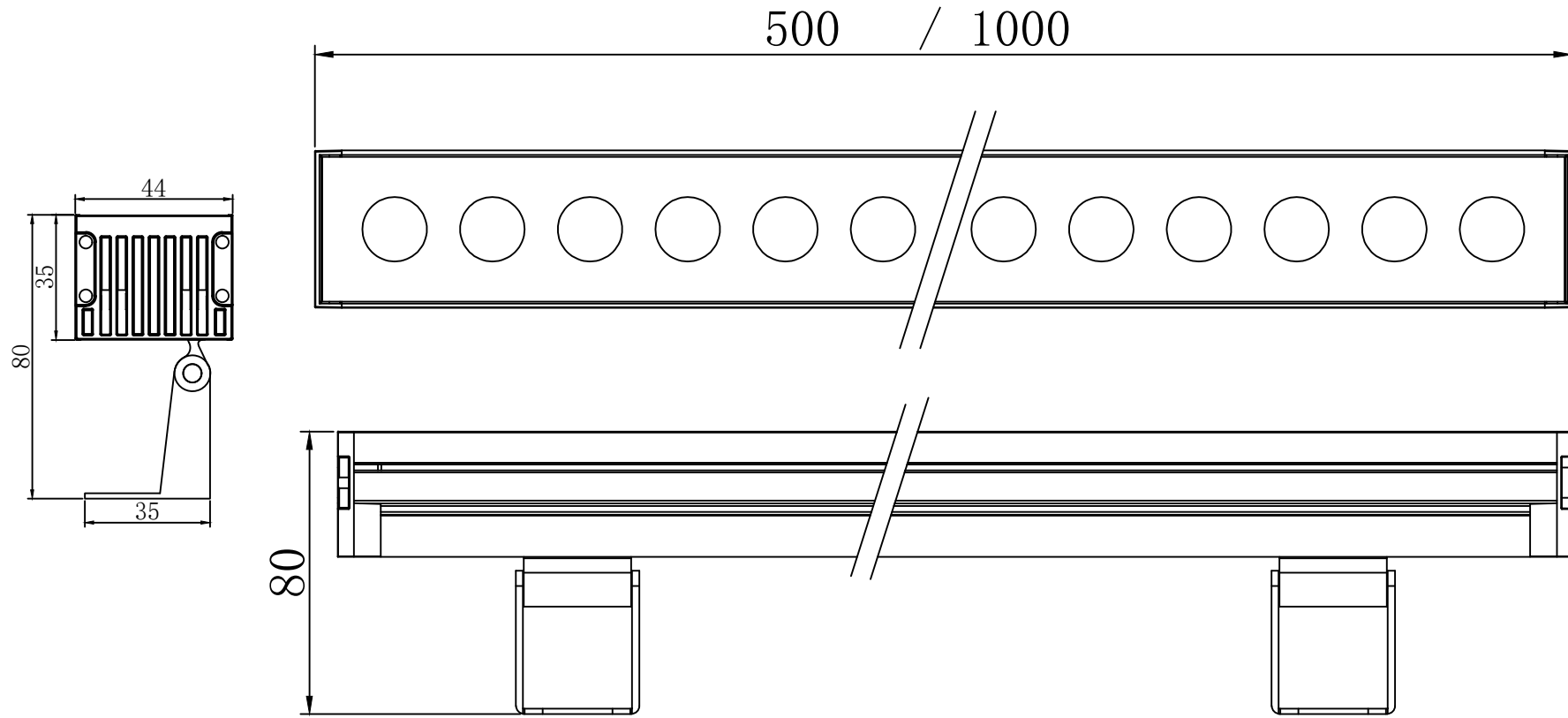
WEGE - - _____
Power Consumption

Power Consumption	
Code	Description
9W	9W @500mm
12W	12W @500mm
18W	18W @500mm
18W	18W@1000mm
24W	24W@1000mm
36W	36W@1000mm

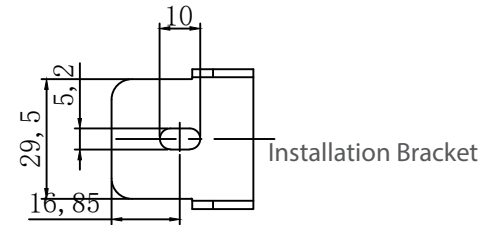


BEAM ANGLE



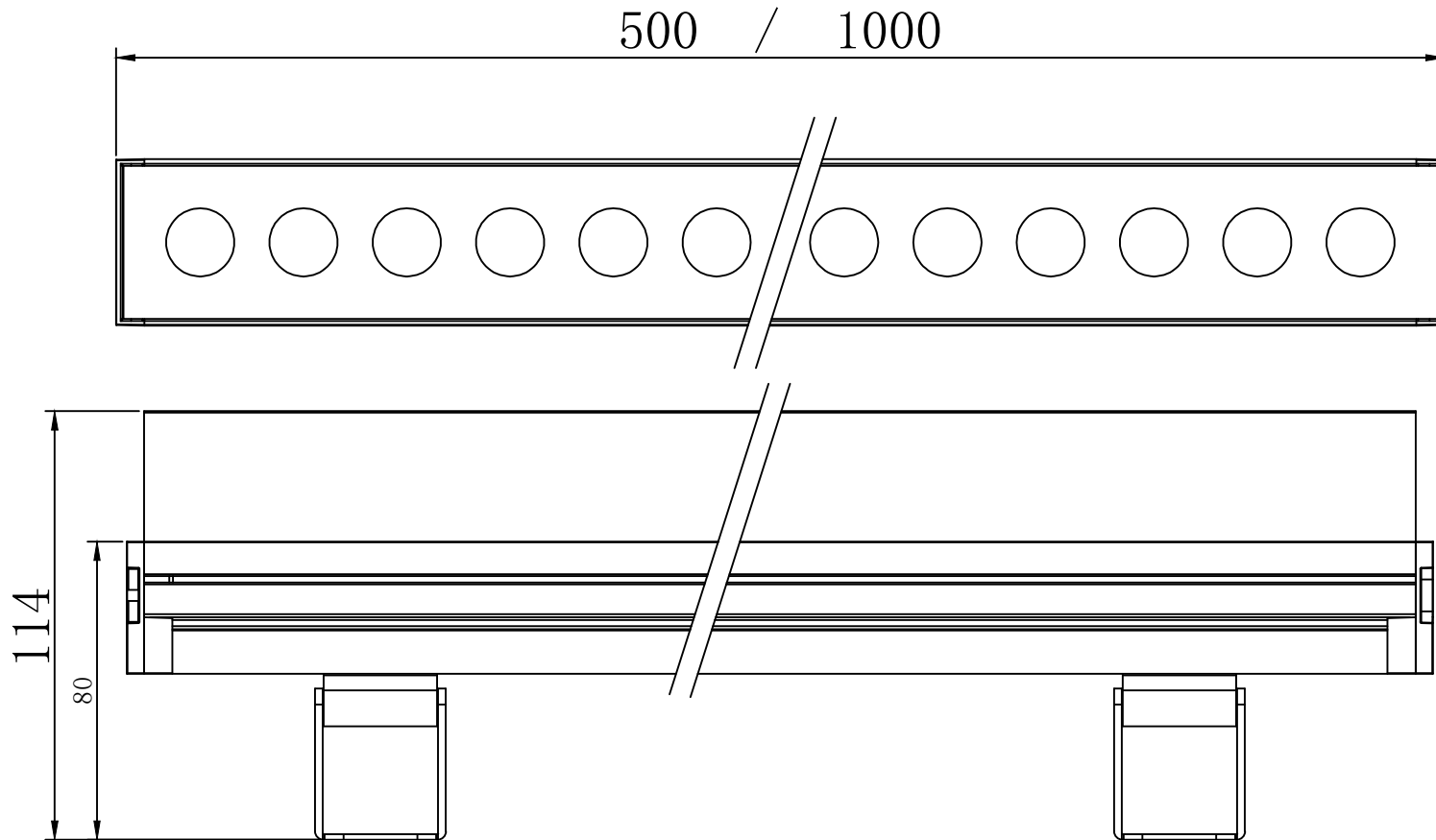
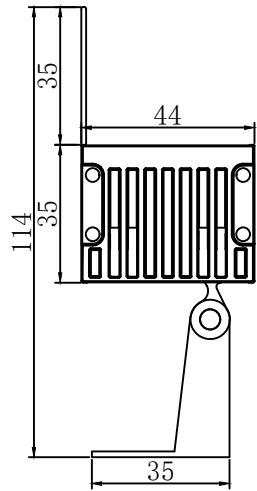


Unit :mm



Technical Drawing

Visor accessories



Unit :mm

